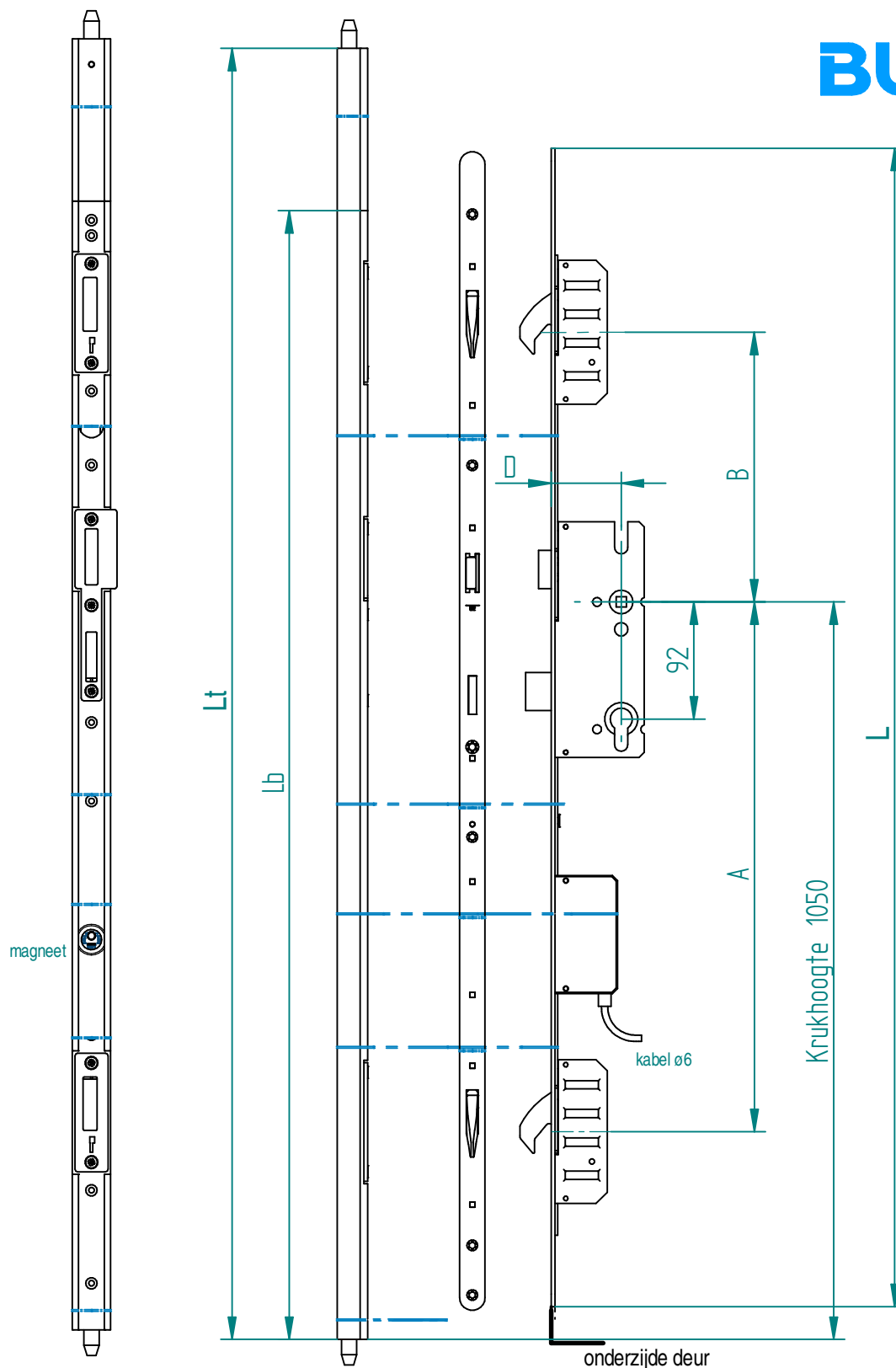


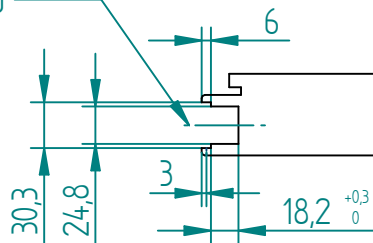
Benaming	Blad	Bladnummer	Revisie
Ergo-Duo met Ergo-Motion	Blad 1	20100025.1014	C01
Freestekening Ergo-Duo	Blad 2	20070037.1073	B01
Maatvoering in deurstijl	Blad 3	20060025.1016	B01
Maatvoering kabeloverbrenging	Blad 4	20060025.1018	B01
Freestekening sluitplaat 211 boven	Blad 5	20100025.1007	A01
Sluitplaat 211 voor Bi	Blad 6	20100023.1005	B01
Nastelmogelijkheden 211	Blad 7	20100023.1007	B01
Freestekening sluitplaat 431 boven	Blad 8	20100025.1008	B01
Sluitplaat 431 voor Bu	Blad 9	20100023.1006	C01
Nastelmogelijkheden 431	Blad 10	20100023.1008	B01
Freestekening 340 t.b.v. Ergo-Duo	Blad 11	20100025.1006	A01
Nastelmogelijkheden sluitpot 340	Blad 12	20080035.1001	A01
Mogelijke stolpoplossing binnendraaiend (Kozijn Bi 54mm deur)	Blad 13	20100025.1009	B01
Mogelijke stolpoplossing binnendraaiend dubbele aanslag (Kozijn dubb. aanslag Bi 54mm deur)	Blad 14	20100025.1015	A01
Mogelijke stolpoplossing buitendraaiend (Kozijn Bu 54mm deur)	Blad 15	20100025.1010	B01
Sluitpot 432	Blad 16	20110015.1018	D01
Sluitpot 432 flens 9gr	Blad 17	20110015.1016	B01
Sluitpot 432 flens 5gr	Blad 18	20110015.1017	B01
Sluitpot 432 standen	Blad 19	20110015.1006	D01
Sluitpot 432 freestekening	Blad 20	20110015.1020	E01



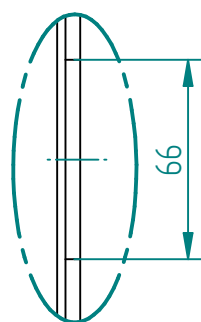
	Lengte MPS	Basis Ergo-Duo	Totaal Ergo-Duo minimaal	Totaal Ergo-Duo maximaal	Haak 1	Haak 2	Doormaat	Doorn 55	Doorn 65
MPS / maat	L	Lb	Lt	Lt	A	B	PC	D	D
Ergo-Motion 1772	1772	1865	2045	2400	770.5	719.5	92	v	v
Ergo-Motion 2090	2090	1865	2300	2400	770.5	1074.5	92	v	v
Ergo-Motion 2090	2090	2220	2401	2700	770.5	1074.5	92	v	v

Ergo-Duo bevestigen met schroeven 4x50mm
Ergo-Motion bevestigen met schroeven 4x40mm

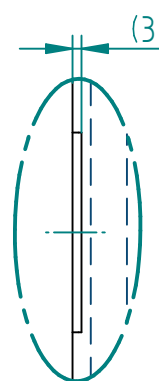
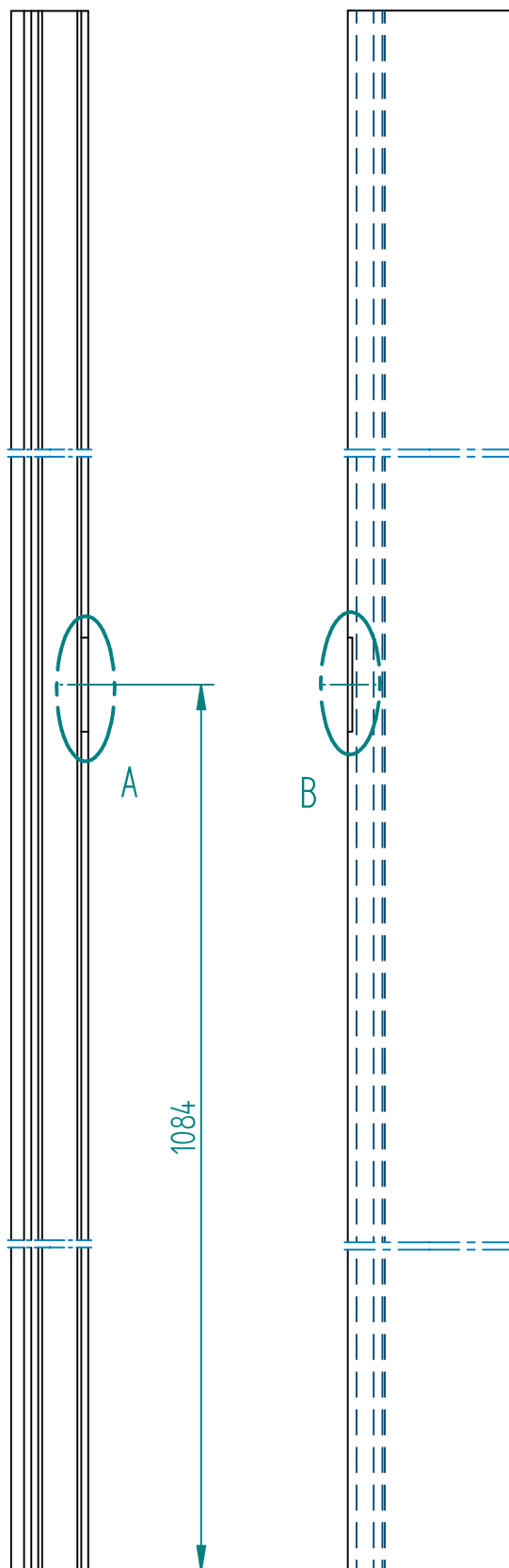
Hart Ergo-Duo
= Hart MPS



BUVA
rationele bouwprodukten

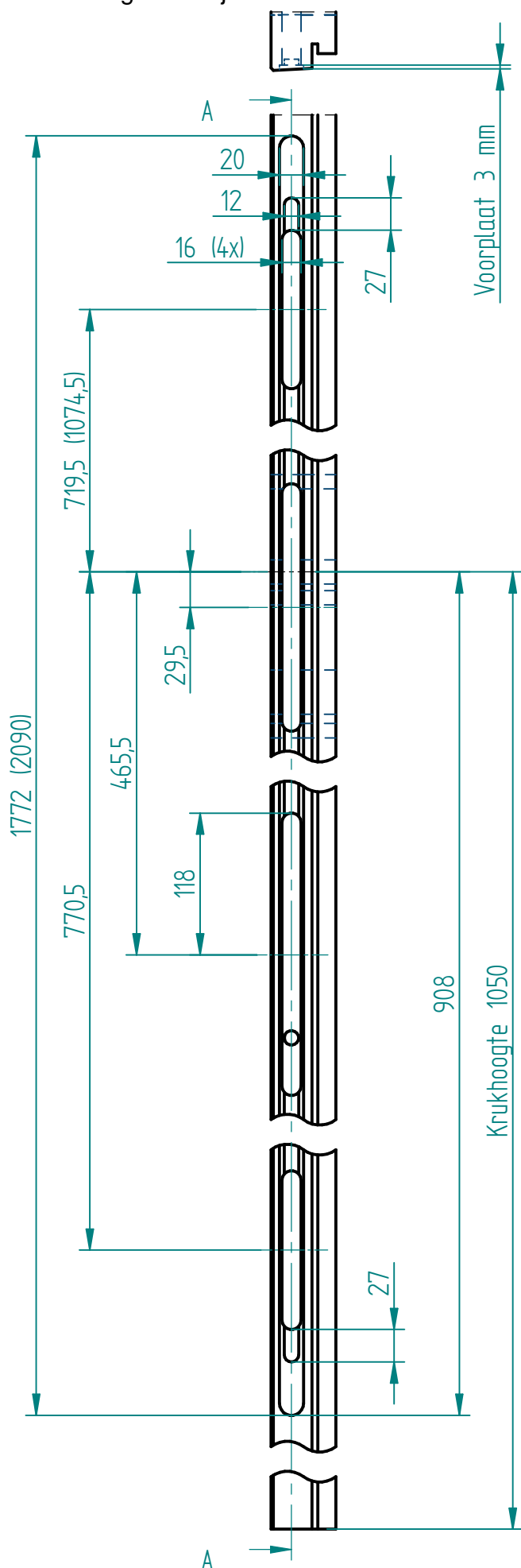


Detail A

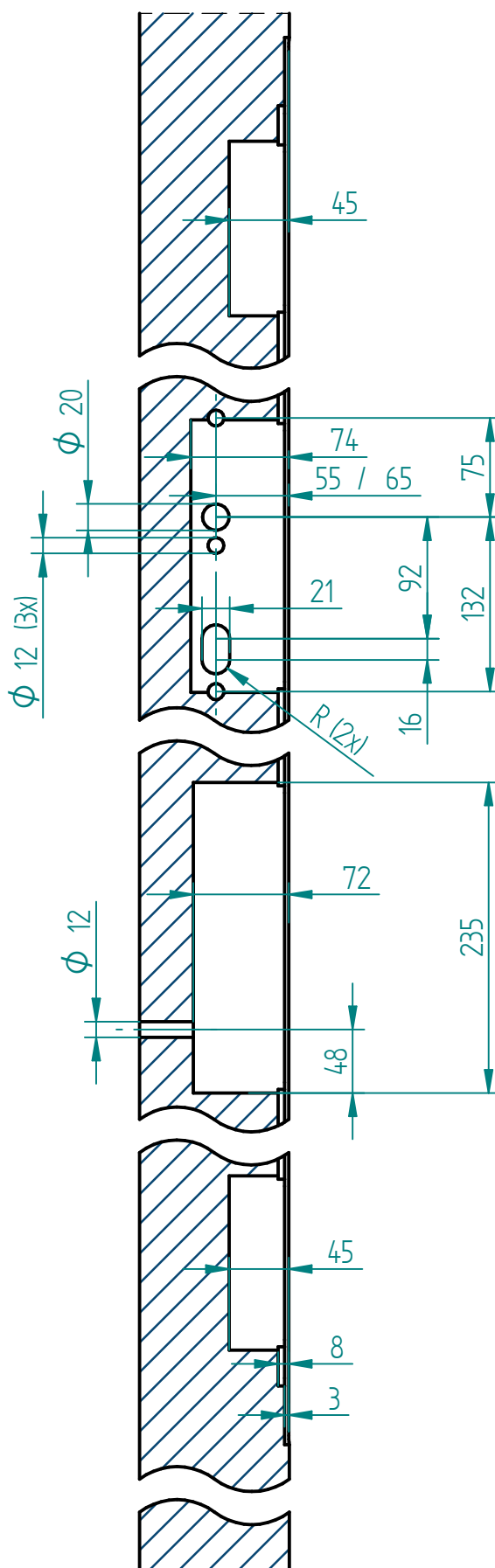


Detail B

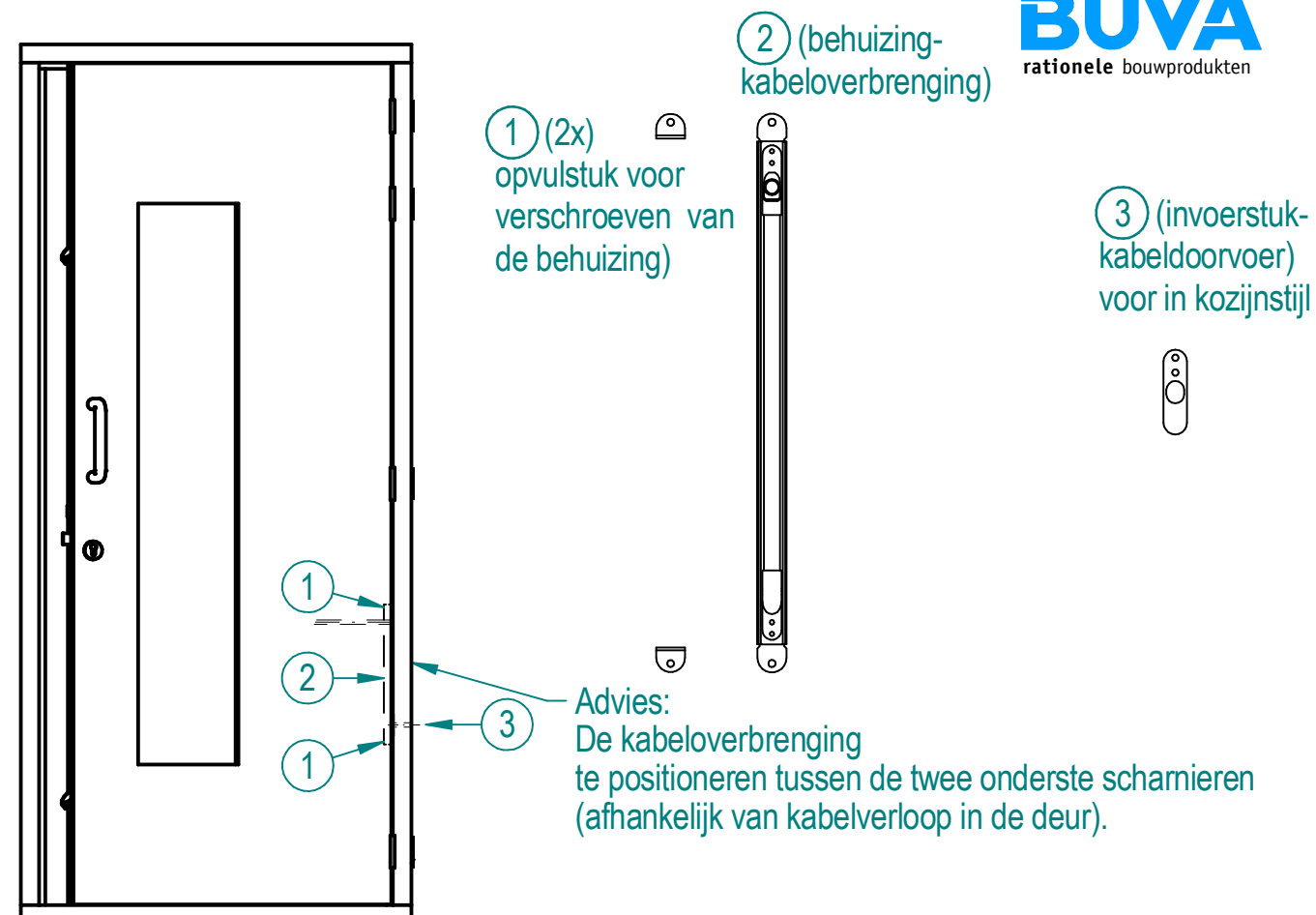
Let op: In maatvoering is geen rekening gehouden met eventuele laagdikte(n) lak



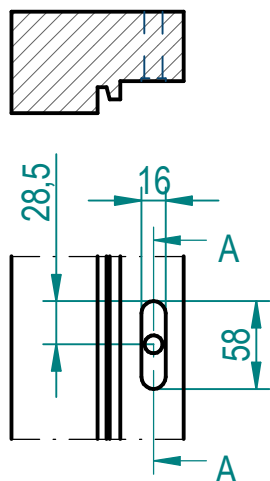
Doorsnede A-A



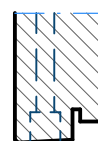
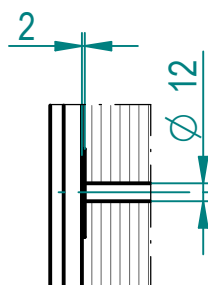
Let op: In maatvoering is geen rekening gehouden met laagdikte(n) lak



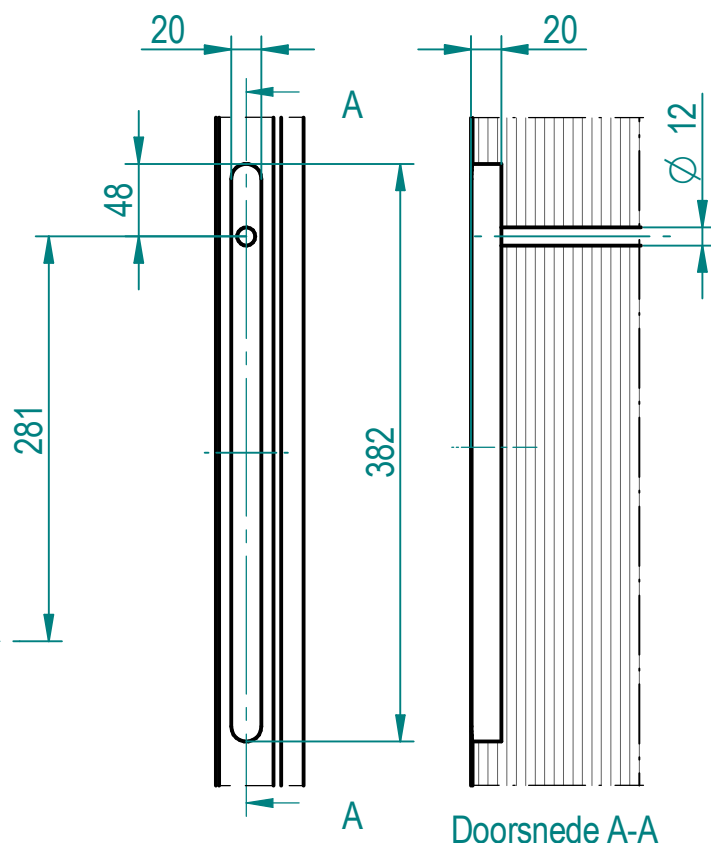
hangzijde kozijnstijl tav
invoerstuk kabeldoorvoer

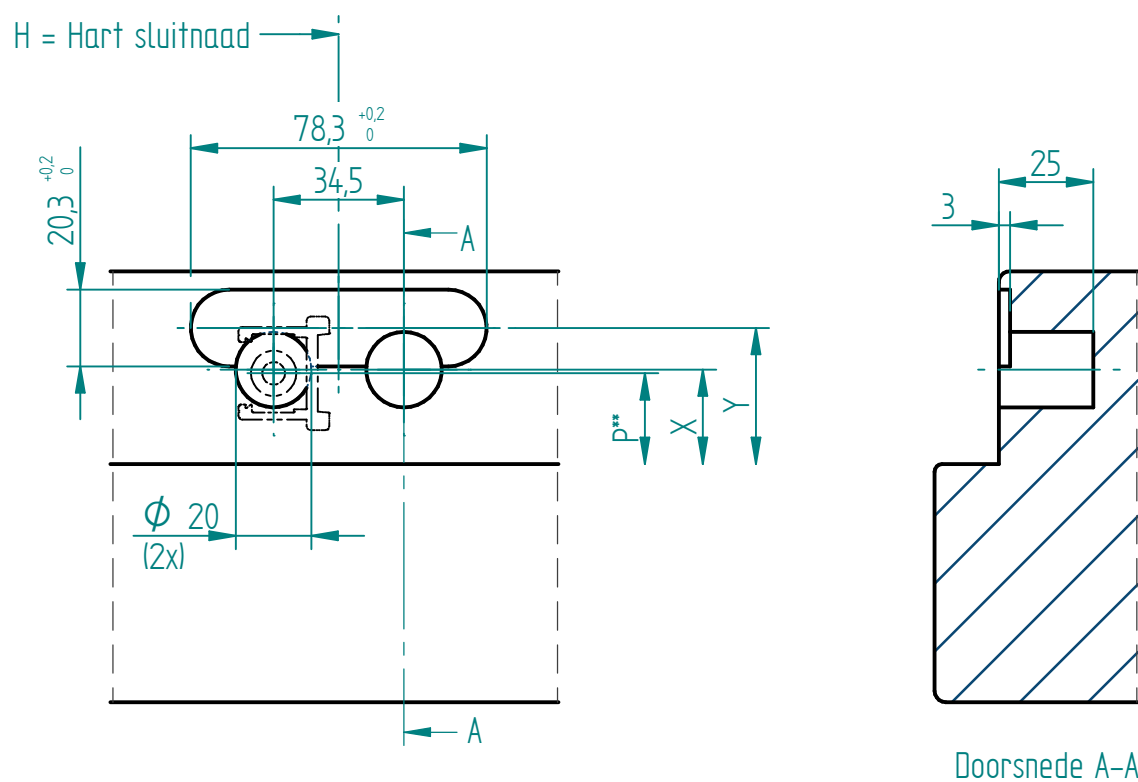


Doorsnede A-A



hangzijde deurstijl tav
behuizing kabeloverbrenging



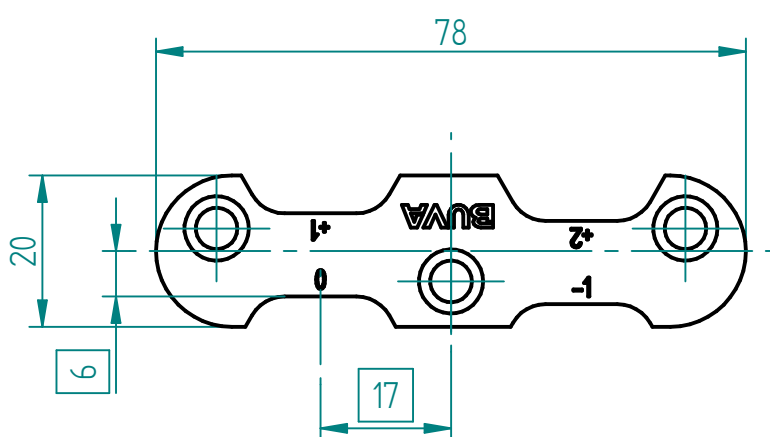
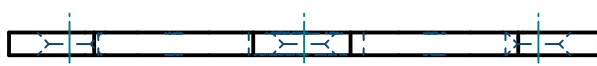
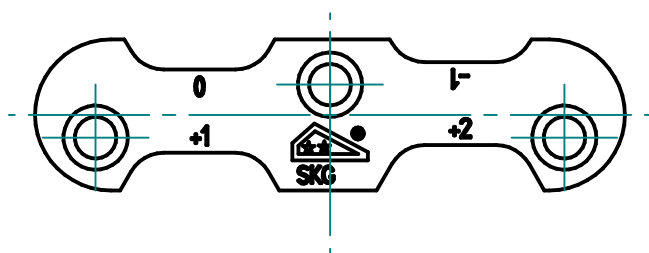


Deurdikte	maat P	maat X	maat Y
38*	24	25	36
40	25	26	37

* getekende situatie

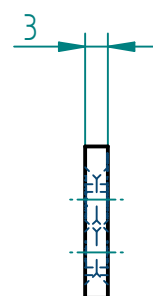
**P is Penmaat

Let op: In maatvoering is geen rekening gehouden met eventuele laagdikte(n) lak



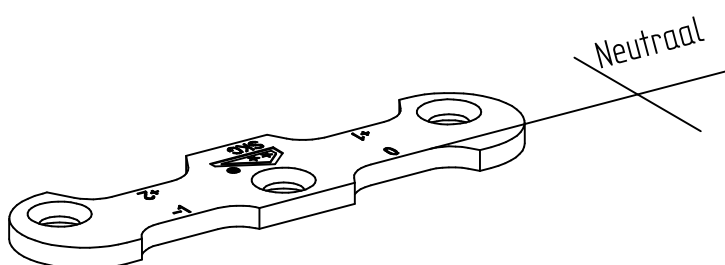
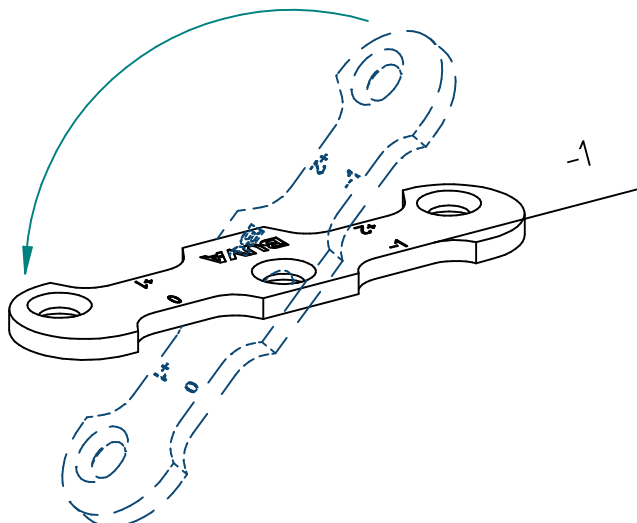
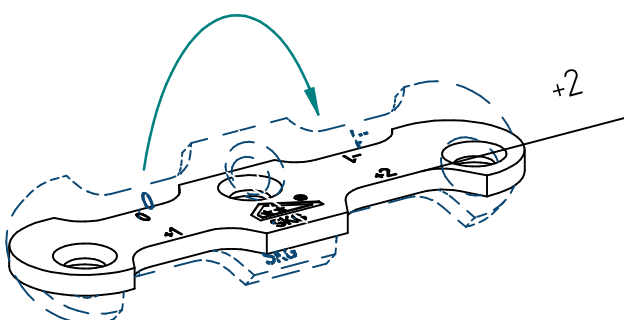
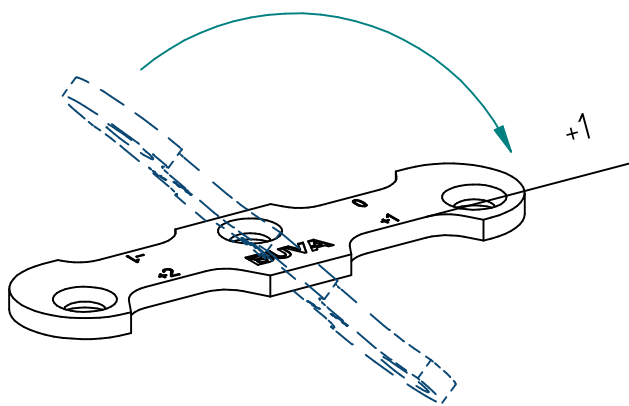
+2
-1

Stelbereik

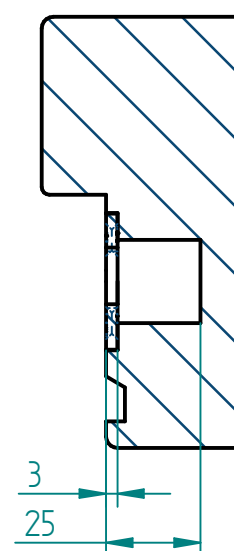
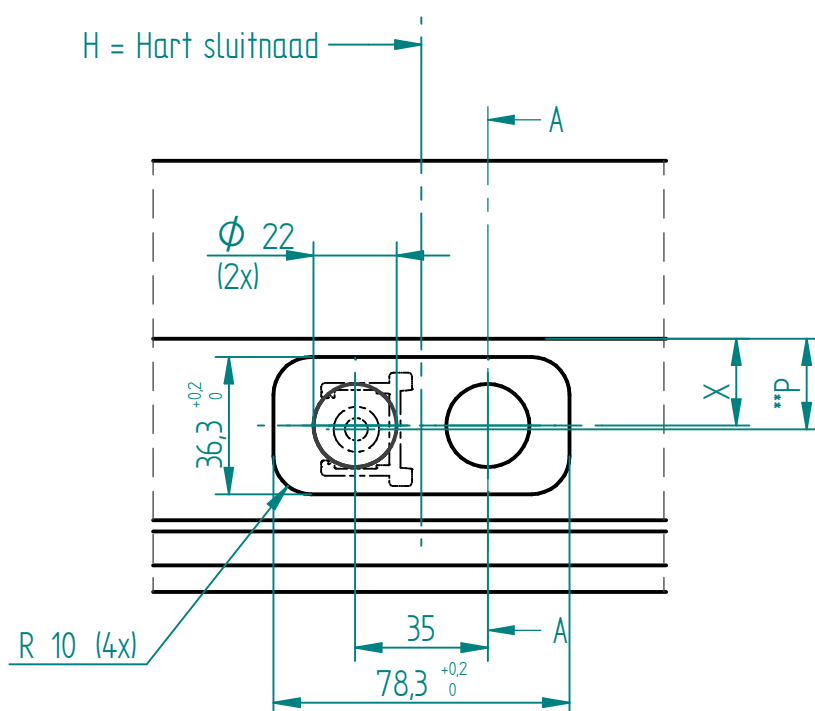


☐ zijn aanslagmaten voor de pen

Bevestigen met schroeven 4X40mm



Trimetric Orientation



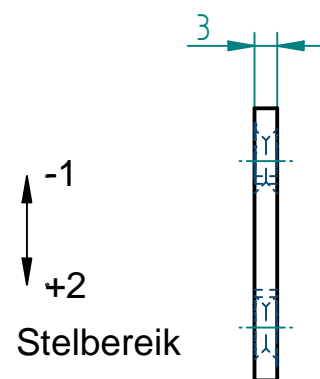
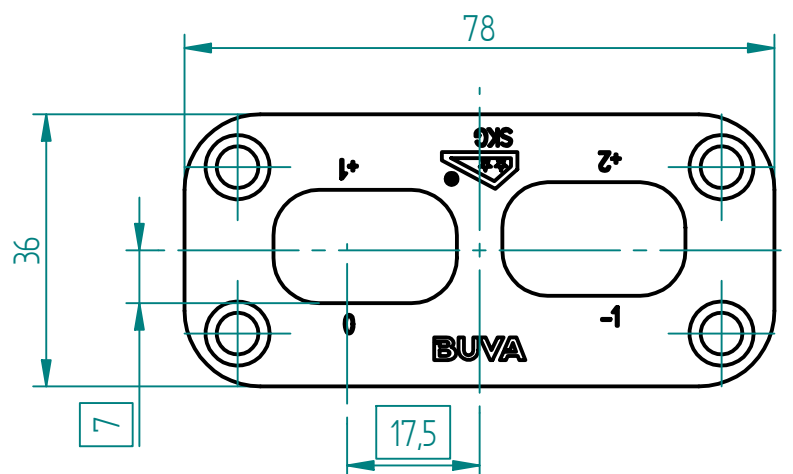
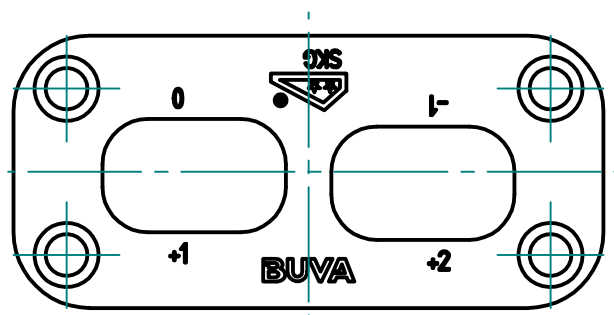
Doorsnede A-A

Deurdikte	maat P	maat X
38*	24	23
40	25	24

* getekende situatie

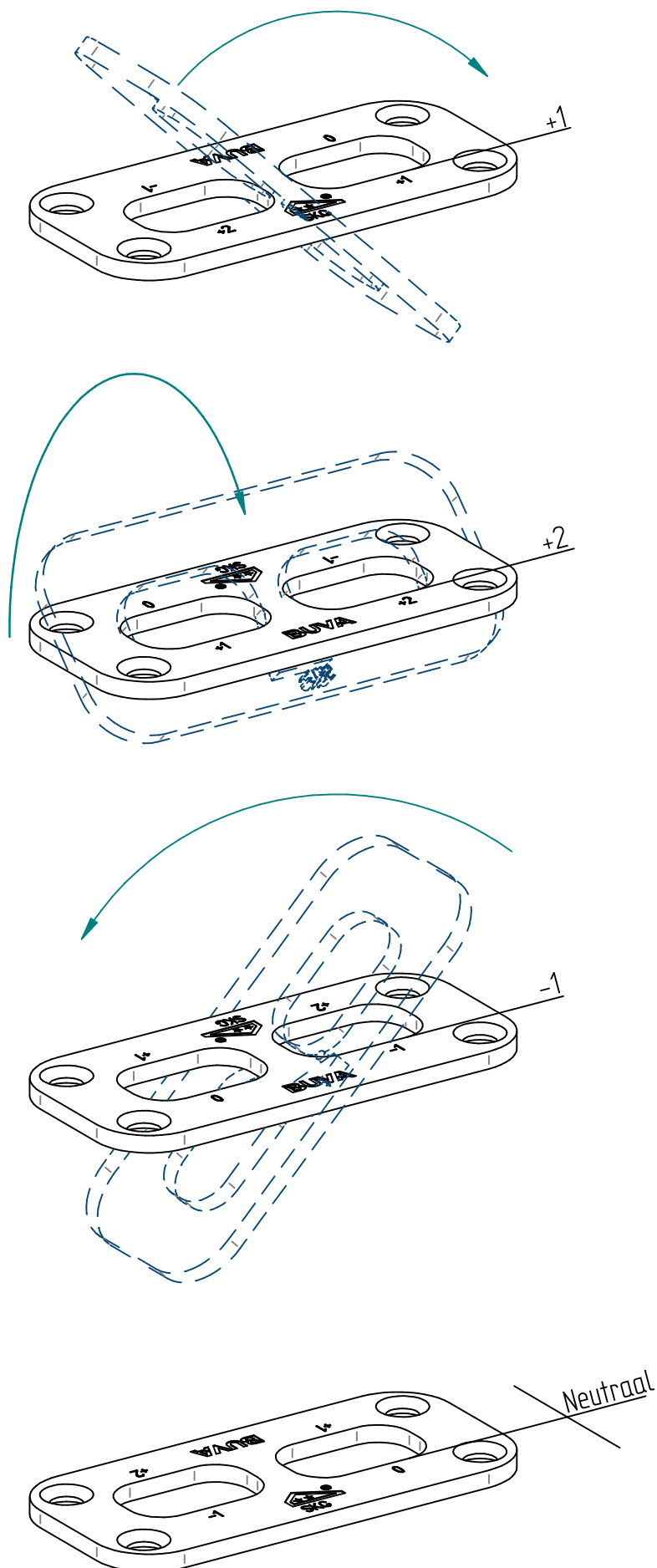
**P is Penmaat

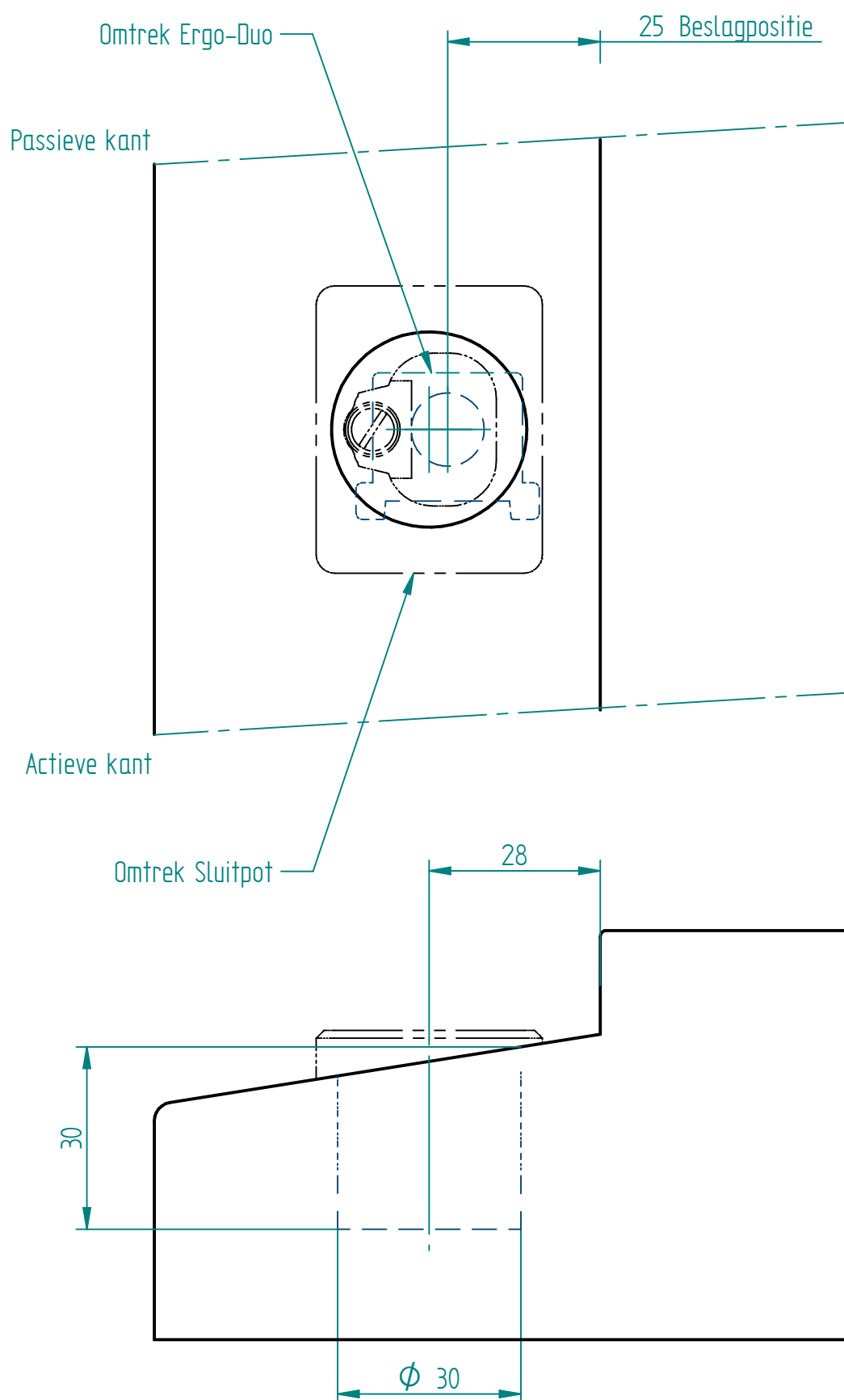
Let op: In maatvoering is geen rekening gehouden met eventuele laagdikte(n) lak



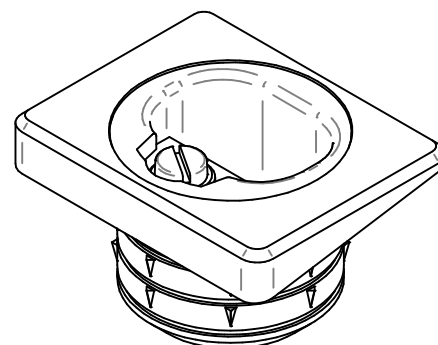
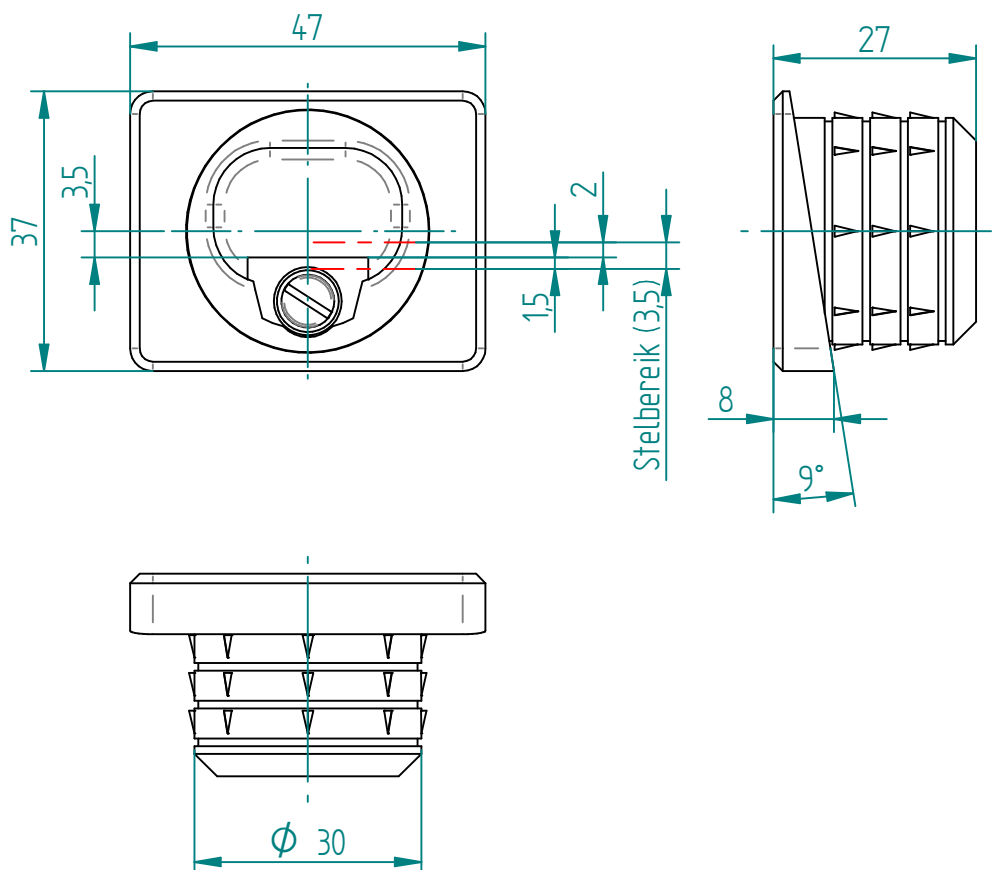
☐ zijn aanslagmaten voor de pen

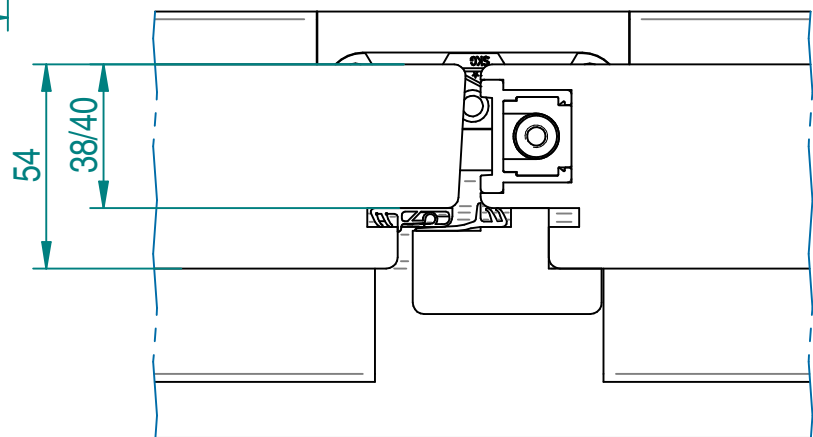
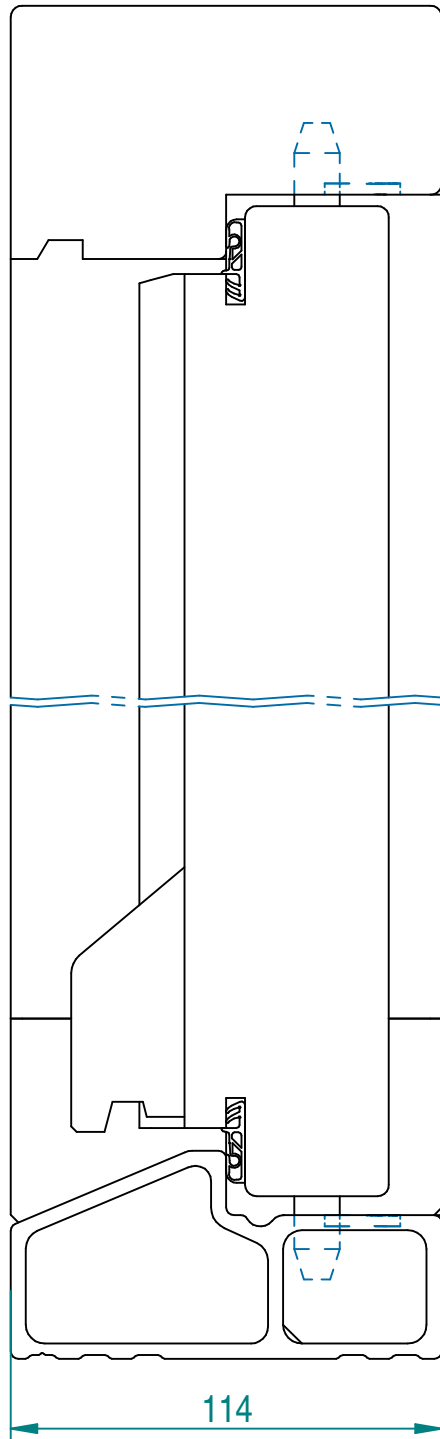
Bevestigen met schroeven 4X40mm

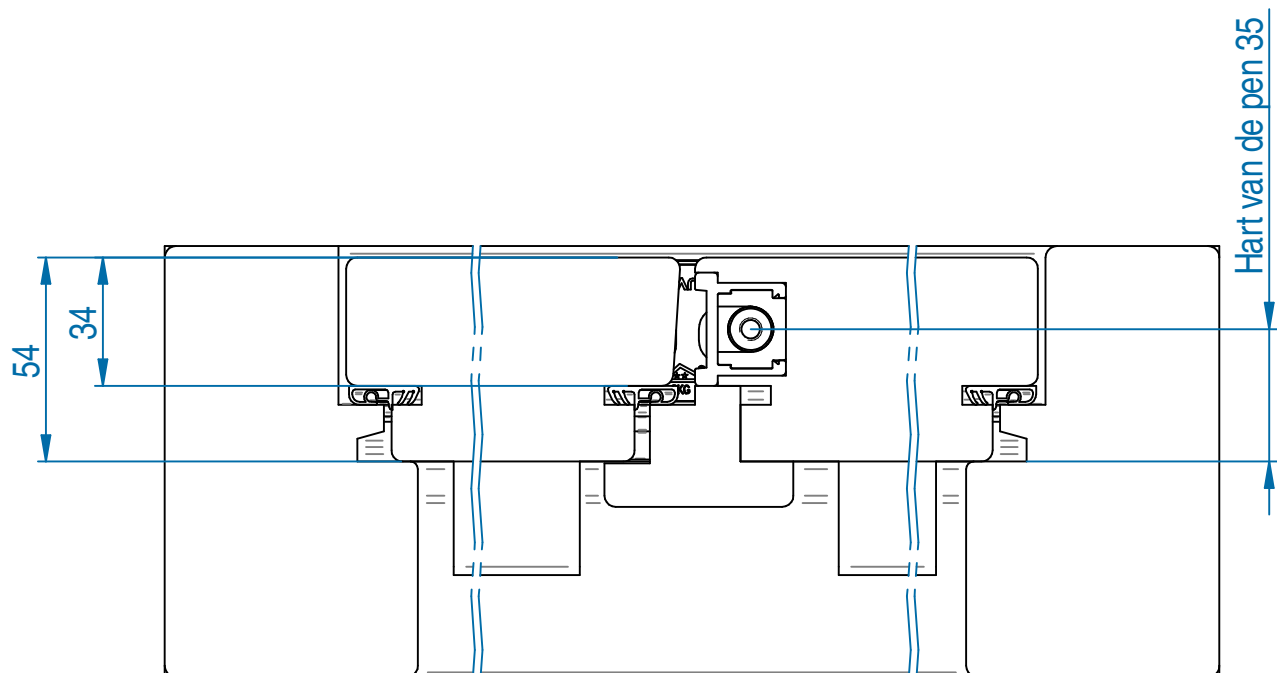
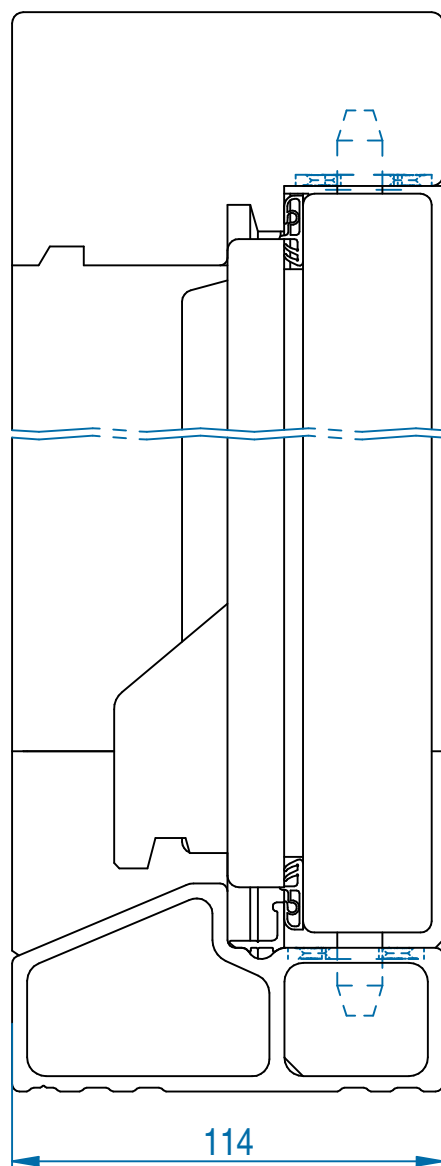


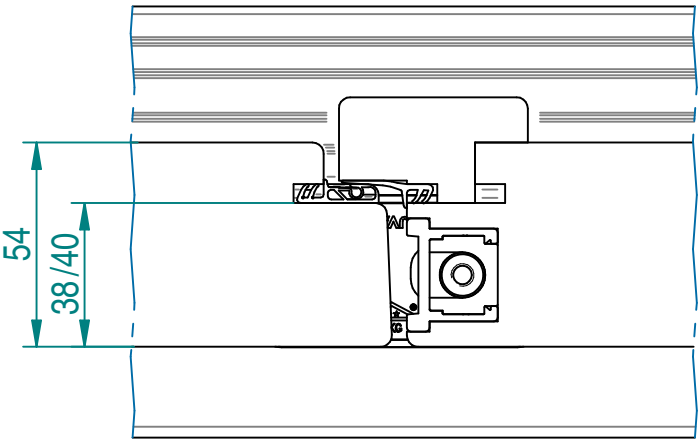
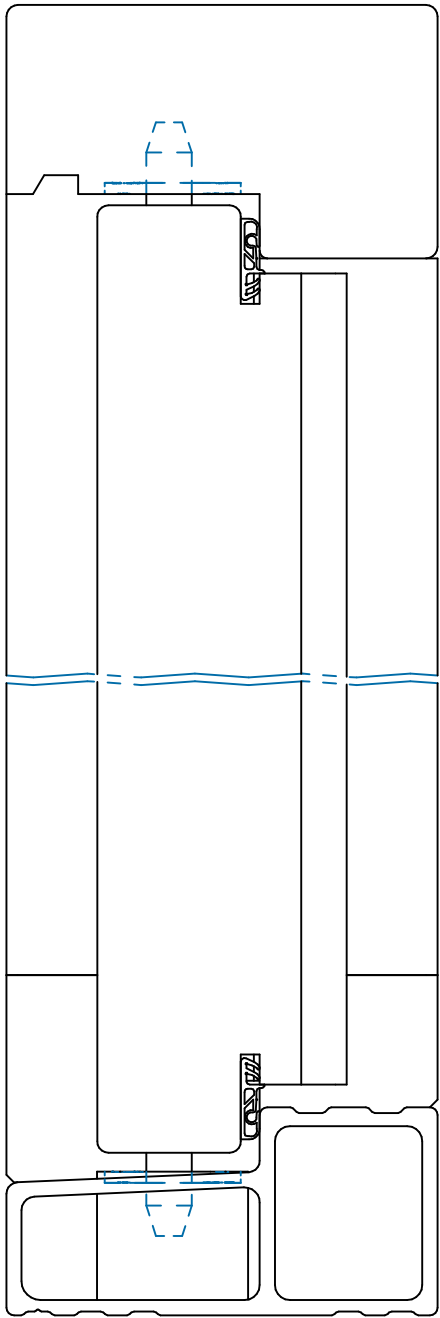


Let op: In maatvoering is geen rekening gehouden met eventuele laagdikte(n) lak



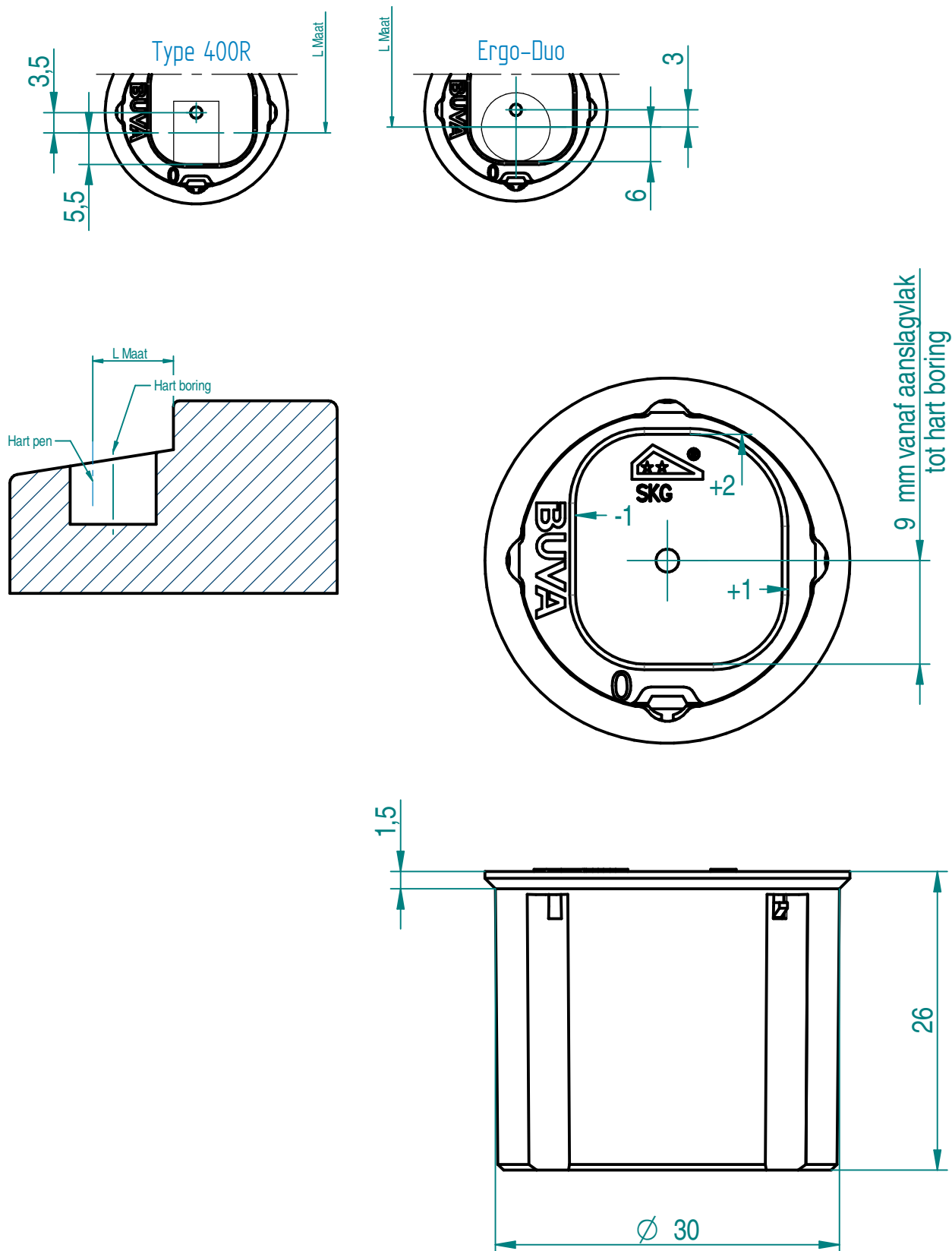




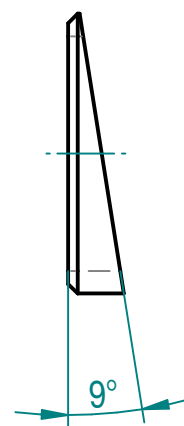
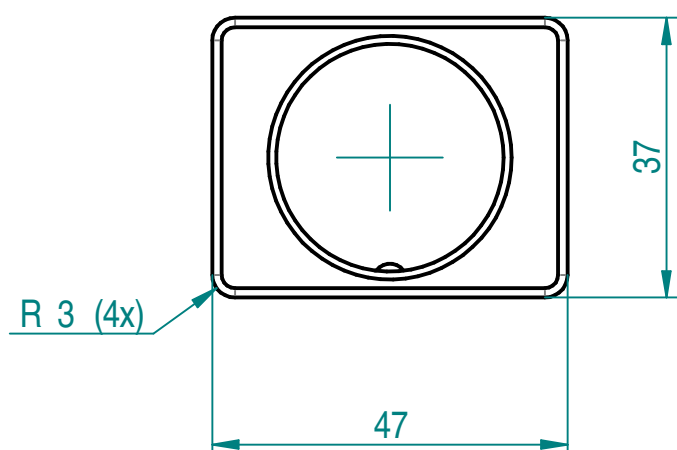
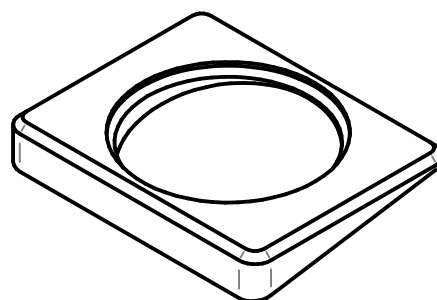


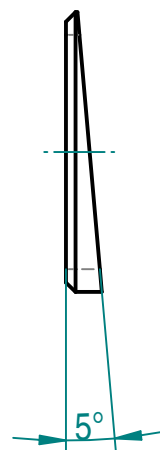
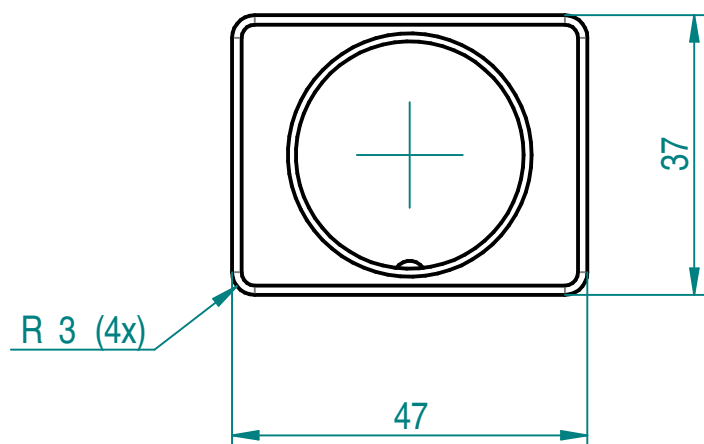
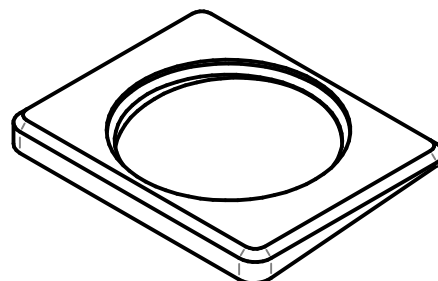
54

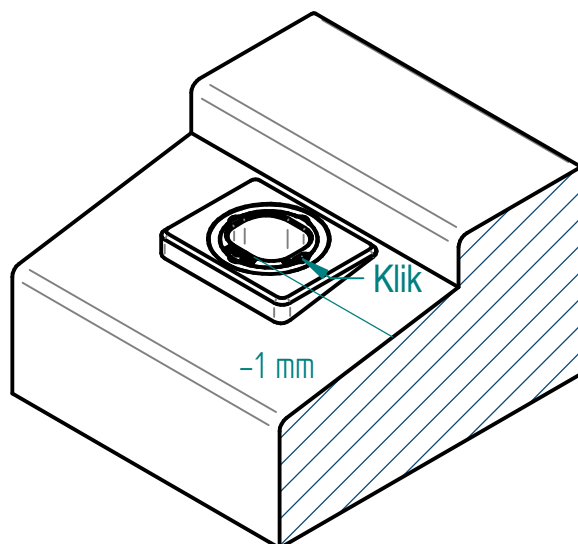
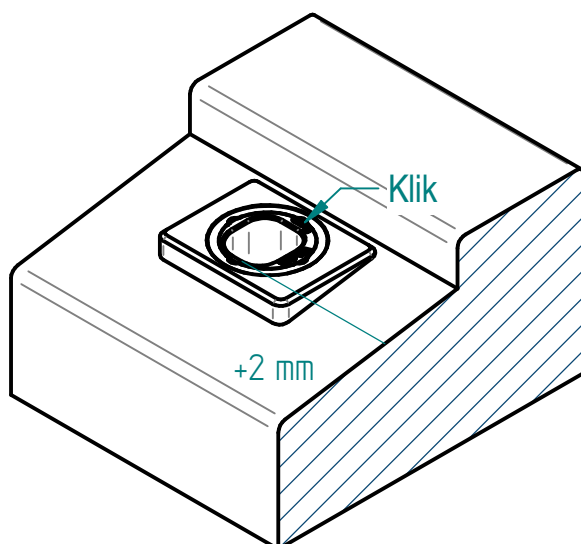
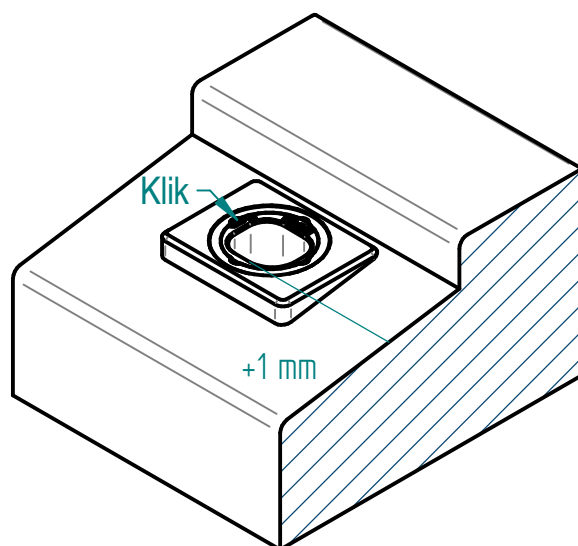
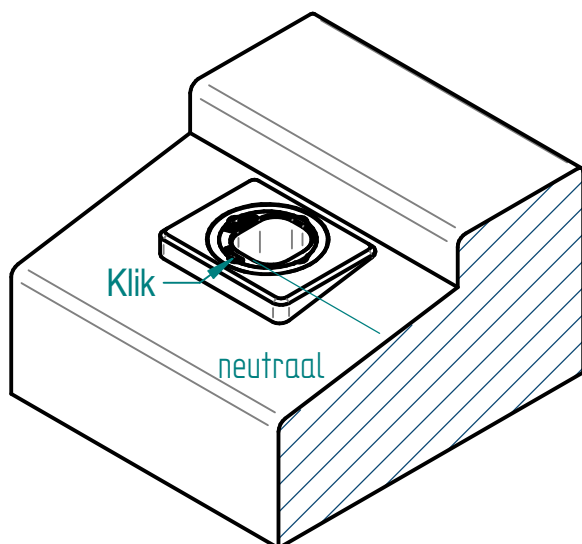
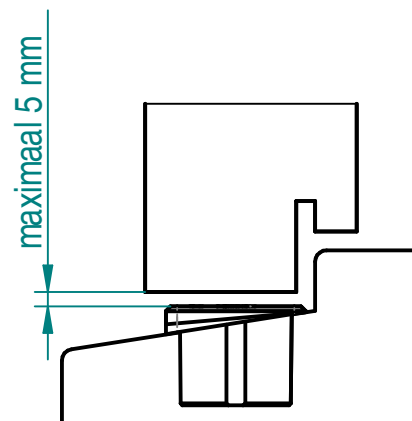
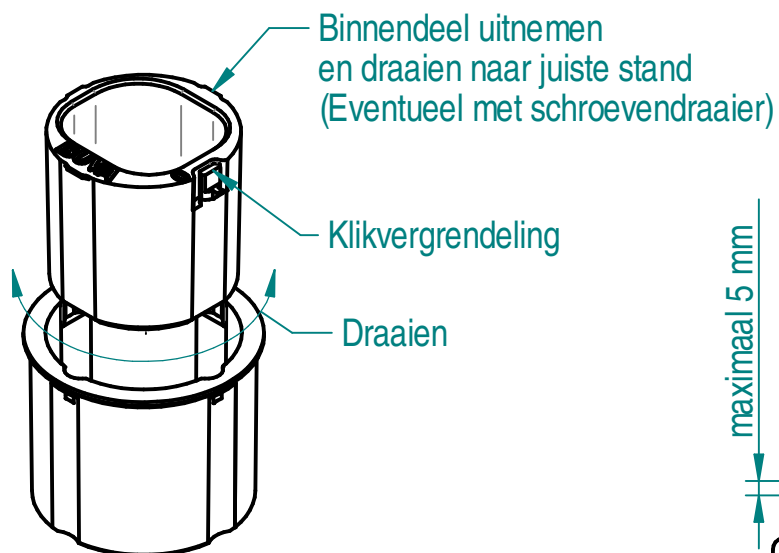
38/40

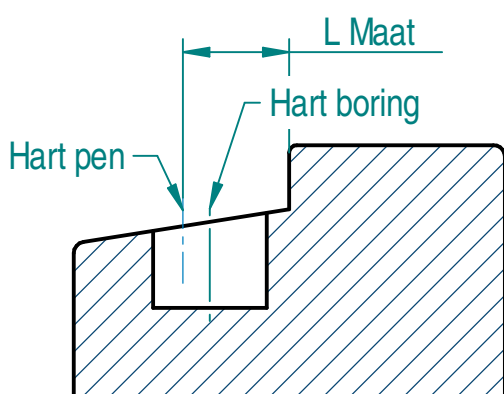
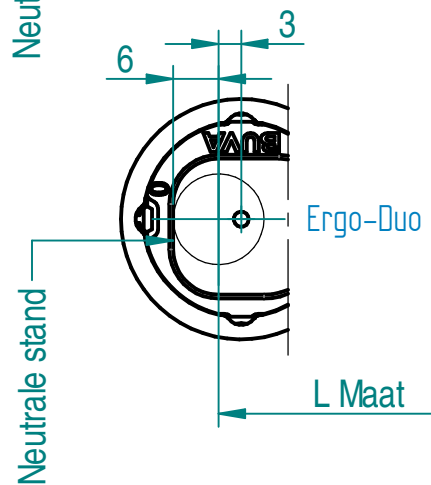
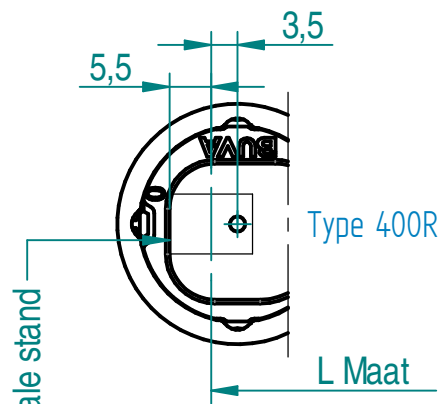


Bevestiging sluitpot : Verlijmen met minimaal D3/D4 lijm
 Infrezen sluitpot : maximaal +0.05 mm
 Verschroeven, alleen voor binnendraaiende
 situatie waarbij sluitpot in damwand zit.
 Schroef: Houtschroef VZK 4x30

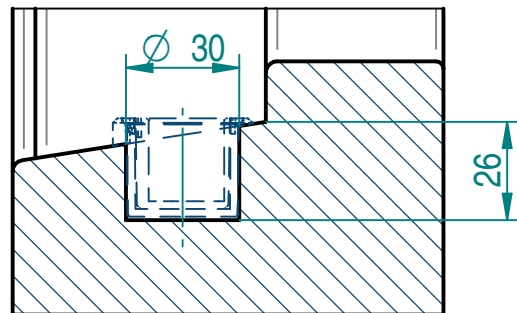
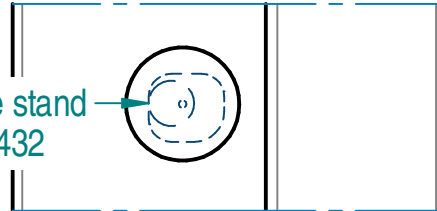








Neutrale stand
sluitpot 432



Neutrale stand
sluitpot 432

